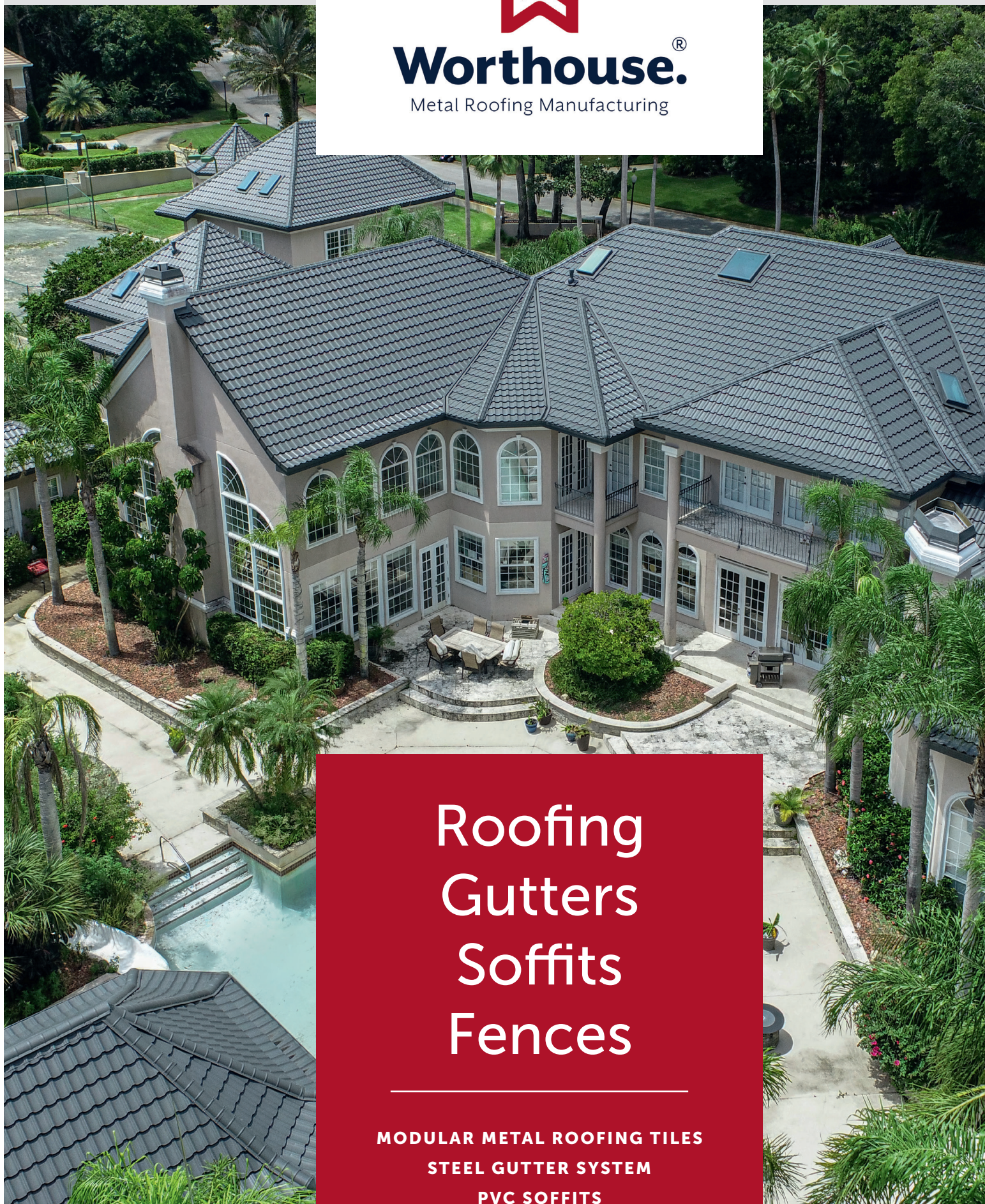




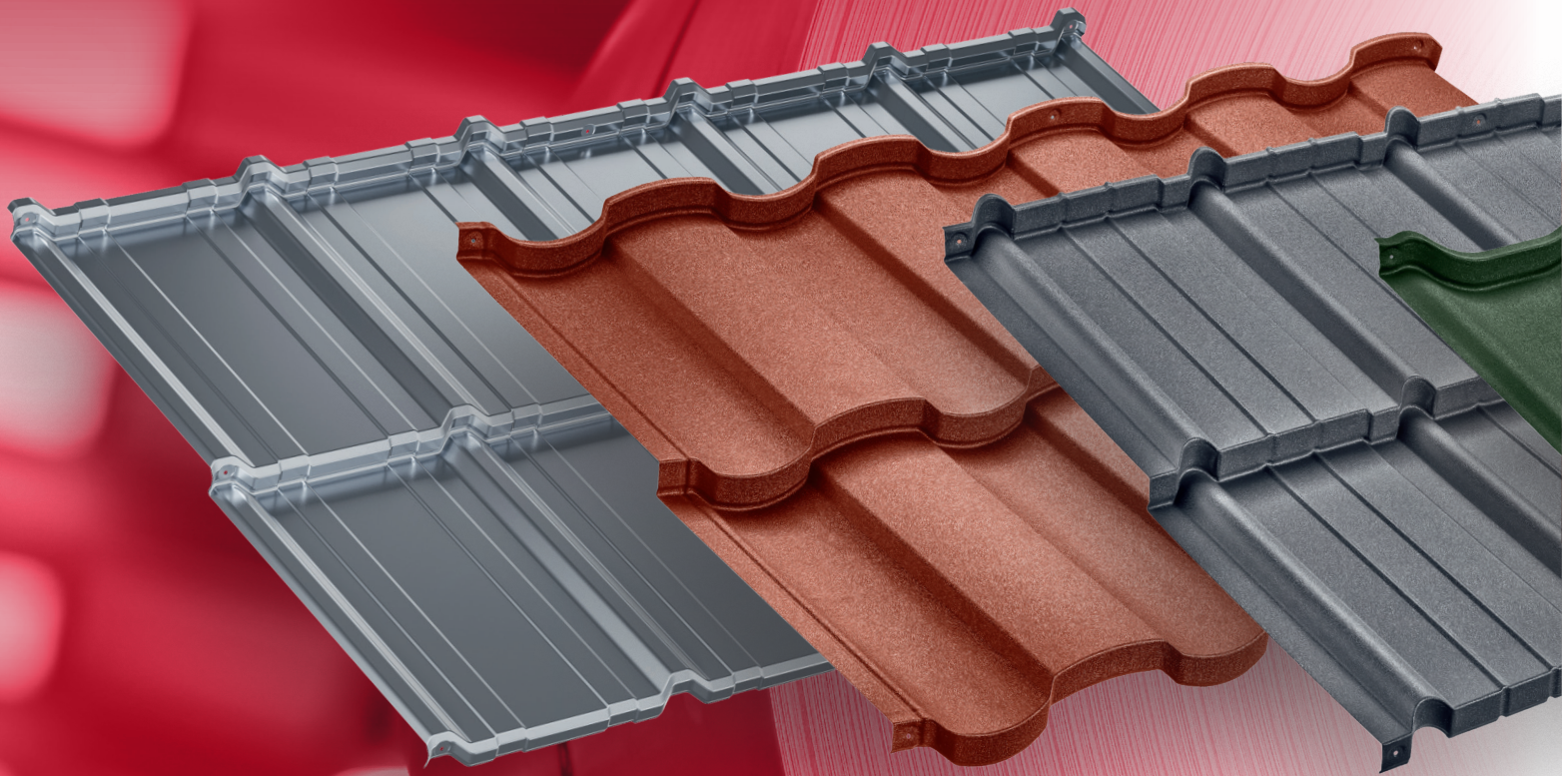
Worthouse.[®]

Metal Roofing Manufacturing




Roofing Gutters Soffits Fences

**MODULAR METAL ROOFING TILES
STEEL GUTTER SYSTEM
PVC SOFFITS
METAL FENCES**



Our metal roofing products
are made from **highest quality steel**

26 GAUGE, G90



MODULAR METAL ROOFING TILES



Steel is durable

Steel roofing products have nearly twice the lifespan of conventional roofing products



Steel is eco-friendly

Steel can be recycled endlessly, which makes it one of the most environmentally friendly materials



Steel roof helps outlast insurability

Even up to 25% in possible home owner insurance premium savings



High wind protection

We achieved the Class 90 Certification for the UL 580
Wind Uplift Resistance test.



The quality of our roofs has been recognized and certified by the Underwriters Laboratories. UL is the largest independent testing laboratory in the world. It is dedicated to promoting safe living and working environments.



Extreme weather and impact protection

Against hailstorm, rain, snow, heat and wind

Our products have achieved Class 4 ratings according to the UL 2218 Roof Impact Classifications



UNMATCHED WARRANTY ON THE MARKET

OUR WARRANTY FOR METAL ROOFING NOT ONLY SPANS UP TO 50 YEARS BUT ALSO COVERS **DAMAGE FROM GOLF BALL IMPACTS.**



Fire protection

We got an "A" in fire protection according to the UL 790
(ASTM E 108) Fire Protection Ratings



Energy bills savings

Up to 20% in energy bills savings



Swift Delivery

Short lead times, ready in just 2 weeks.
Our roofing panels are always in stock



Lightweight

30 times lighter than concrete tiles.
The weight of one panel is just around 8 lbs



SYSTEM WORTHHOUSE METAL MODULAR ROOF
RECOMMENDED BY ITB - BUILDING RESEARCH INSTITUTE
WARSAW - EUROPEAN UNION
RT ITB - 1292/2020 - NUMBER OF TECHNICAL RECOMMENDATION
ITB EU - SECOND BIGGEST BUILDING RESEARCH INSTITUTE IN EUROPE
1488 - NUMBER OF INSTITUTE'S NOTIFICATION IN EUROPEAN UNION

WORTHHOUSE ROOF PROTECT YOUR HOME

"The installation process for my Worthhouse metal roof was seamless.

The roof has been through 3 hail storms and didn't receive any damage while the houses around me are having their shingles replaced.

I love how my roof sticks out from all the other houses and has a 50 year warranty to showcase its beauty and reliability. Would 100% recommend."

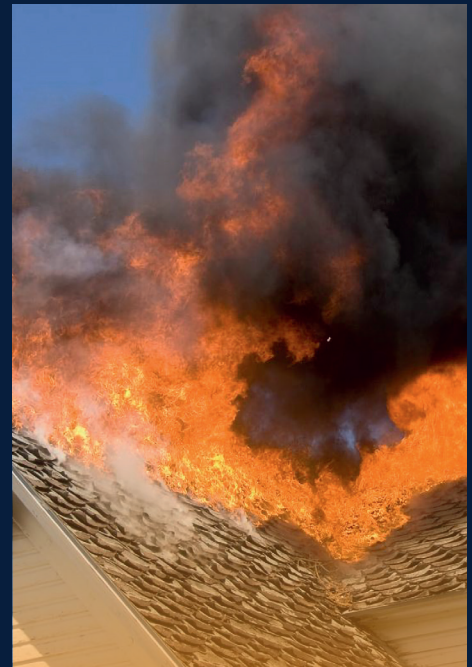
Chris W., Texas



Class
90



Class
4



Class
A



PROTECTIVE SHIELD

Noble Matte

Covered with the Noble Matte coating, it effectively protects against long-term wear and provides maximum corrosion resistance in any conceivable application.

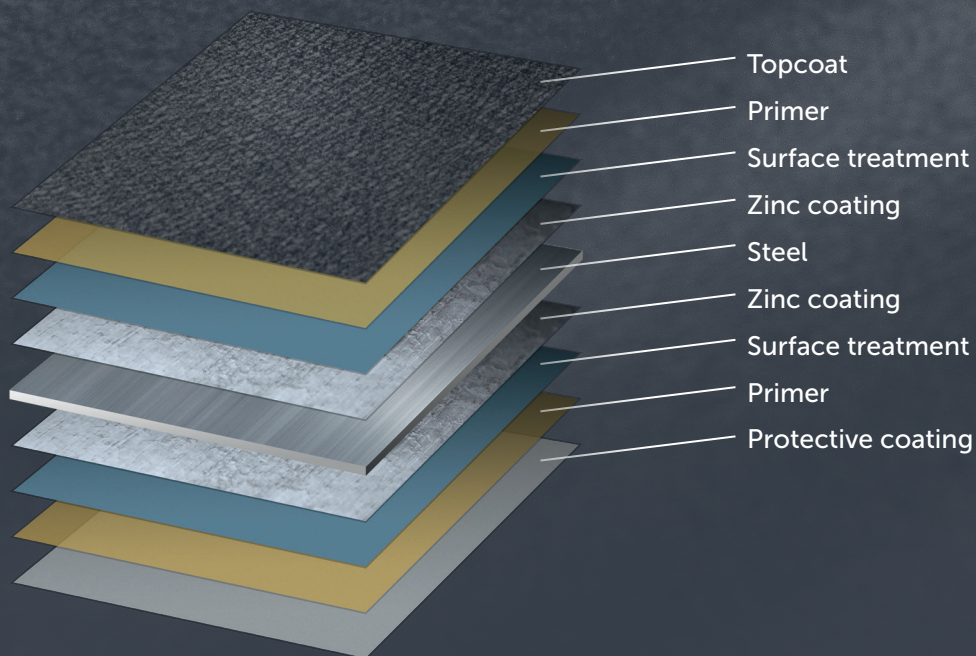
Stable and constant

The Noble Matte coating not only protects against discoloration, but also functions as an all weather shield.

It says no to re-roofing

Forget about re-roofing. All of our metal roofing panels will serve you reliably for generations. The steel and protective shield form a very powerful duo of protection.

Manufactured in color



INLAND LOCATION

UP TO **50** YEARS

COASTAL LOCATION

UP TO **30** YEARS



G90
0.90
oz/ft²

ZINC
275
minimum g/m²



PROTECTIVE SHIELD

Magnelis® **NEW**

Available only for
Modular Metal Roofing Tile
Como

Magnelis® is a unique metallic coating that represents a breakthrough in corrosion protection. It is the best material with numerous uses.

Magnelis® coating has undergone the most severe corrosion performance tests in Daytona Beach laboratories. The results were uncomparable with any other coating on the market!

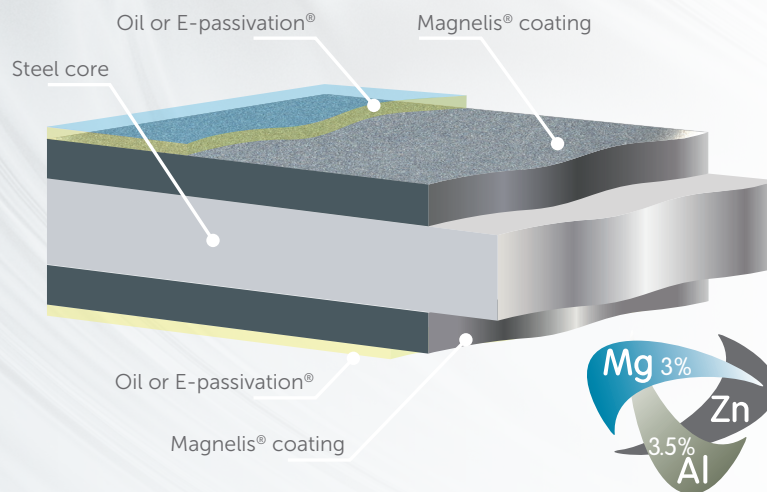
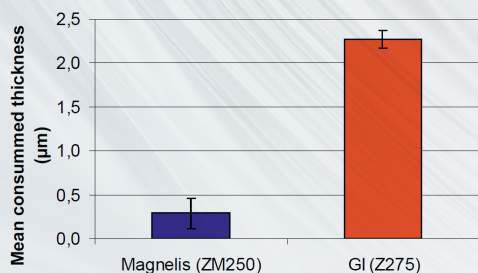


The Magnelis® corrosion performance is a minimum of 3 times greater than galvanized steel in all environmental classes!

WORTHHOUSE IS DELIGHTED TO PRESENT TO YOU OUR ROOF OFFERING OF MAGNELIS COATING WITH AN AMAZING WARRANTY

- **30 Year Warranty** for inland location
- **20 Year Warranty** for coastal location*
* at least 3,000 ft from coast

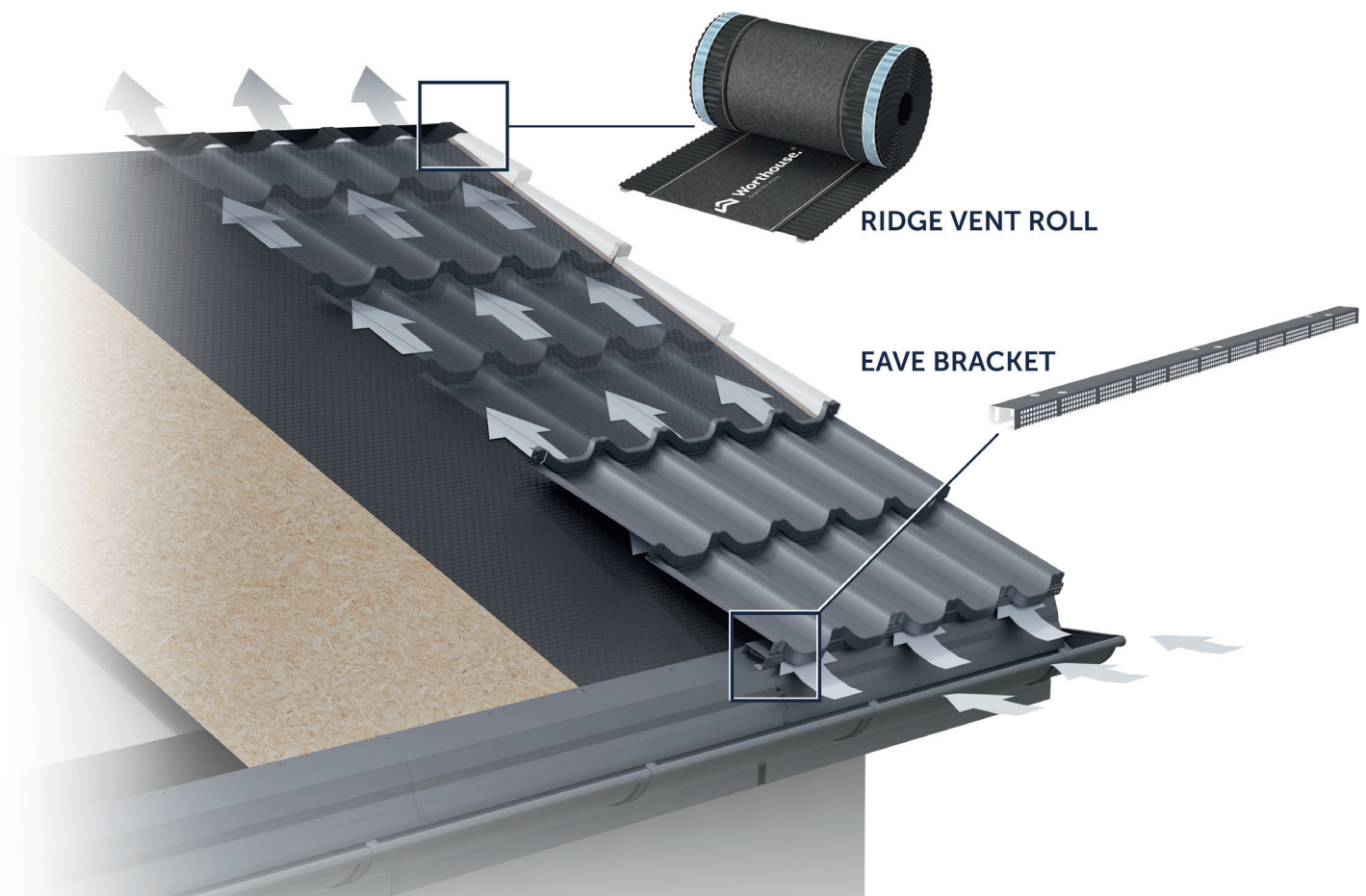
Corrosion performance – outdoor exposure.
Complementary data in a very severe environment
First data after 1 year exposure.



MODULAR ROOFS ARE EASY TO INSTALL



PROPER ROOF VENTILATION





	Supre	Ultra	Como	Dura <small>BRAND NEW</small>
Weight of one pallet:	2920 lb	2650 lb	2980 lb	2930 lb
Quantity per pallet:	350 pcs	319 pcs	352 pcs	352 pcs
Effective surface area of one pallet:	3032 sq ft	2739 sq ft	3133 sq ft	3050 sq ft
Dimensions of one pallet WxHxD:	48x37x32 in	48x41x32 in	49x34x32 in	48x41x32 in



Simple transport

One pallet contains over 3000 sq ft (Supre, Como, Dura), 2700 sq ft (Ultra) of material – enough to cover an average size roof



Easy to install

Pre-drilled holes and modular assembly speed up installation and reduce mistakes



Cost effective installation

Our products average less than 5% waste during installation compared to industry norms greater than 10%

Supre

Classic shape modular metal roofing panels

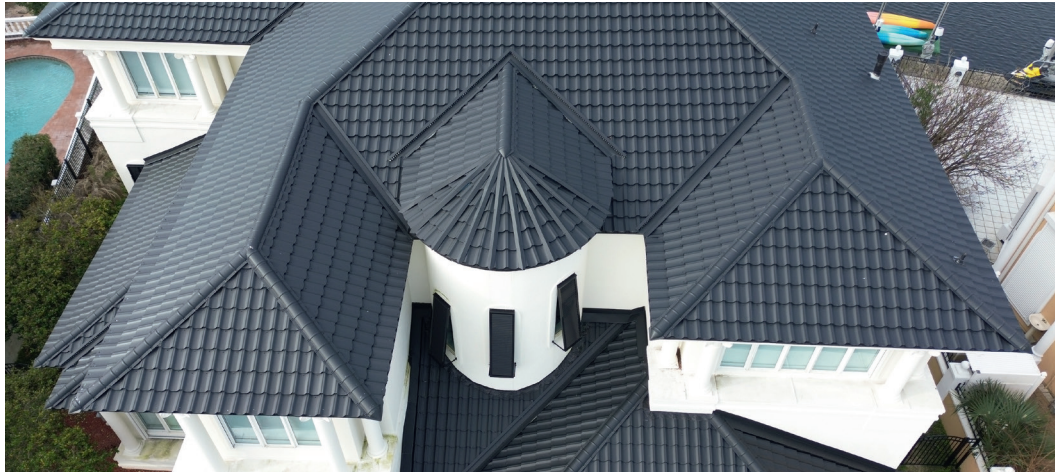


Atlantic Gray

Noble Matte

NEW

Ask your Worthouse Sales Representative
about other available colors



Raven Black

Noble Matte



Sierra Brown

Noble Matte



Pacific Gray

Noble Matte



Canyon Red

Noble Matte



Atlantic Sand

Noble Matte

NEW



Pine Green

Noble Matte

NEW

Dura

BRAND NEW

Mediterranean style metal roofing panels



Canyon Red

Noble Matte

Ask your Worthouse Sales Representative
about other available colors



Raven Black

Noble Matte

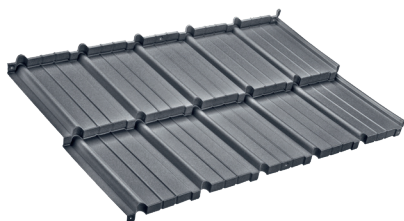


Sierra Brown

Noble Matte

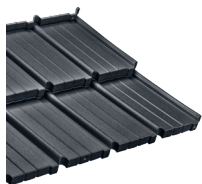
Ultra

Modern shape modular metal roofing panels



Pacific Gray
Noble Matte

Ask your Worthouse Sales Representative
about other available colors



Raven Black
Noble Matte



Sierra Brown
Noble Matte



Canyon Red
Noble Matte

Como

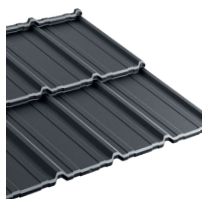
Cutting-edge contemporary metal roofing panels



Atlantic Gray
Noble Matte

NEW

Ask your Worthouse Sales Representative
about other available colors



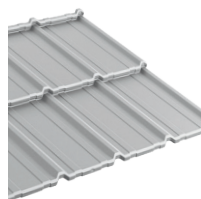
Raven Black
Noble Matte



Sierra Brown
Noble Matte

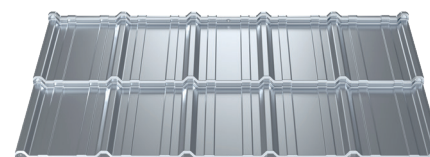


Pacific Gray
Noble Matte



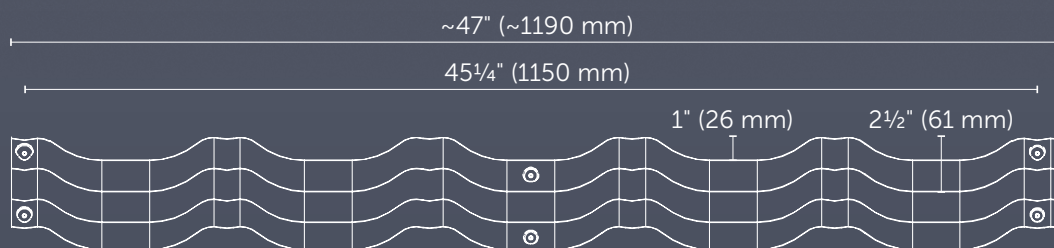
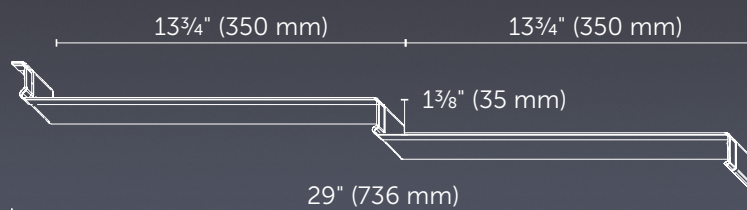
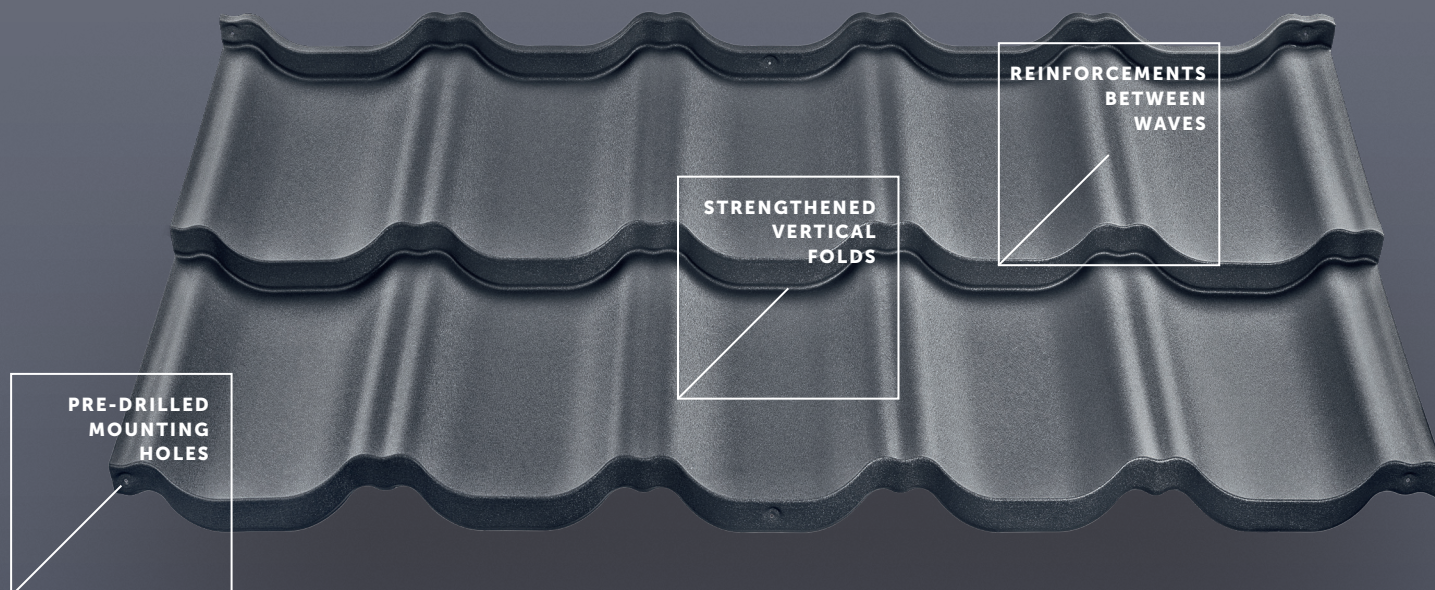
Atlantic Sand
Noble Matte

NEW



Magnelis®
Mill Finish

NEW



Supre



Effective width

3.77 ft

1150 mm

Total width

3.9 ft

1190 mm

Weight per piece

8.16 lb

3.7 kg

Effective surface area of one sheet

8.66 sq ft

0.805 sq m

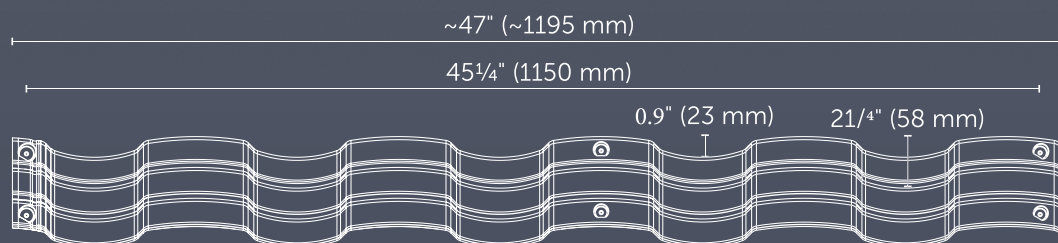
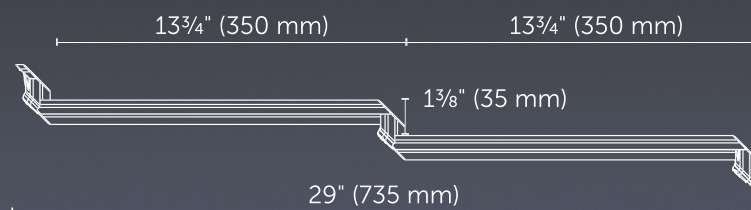
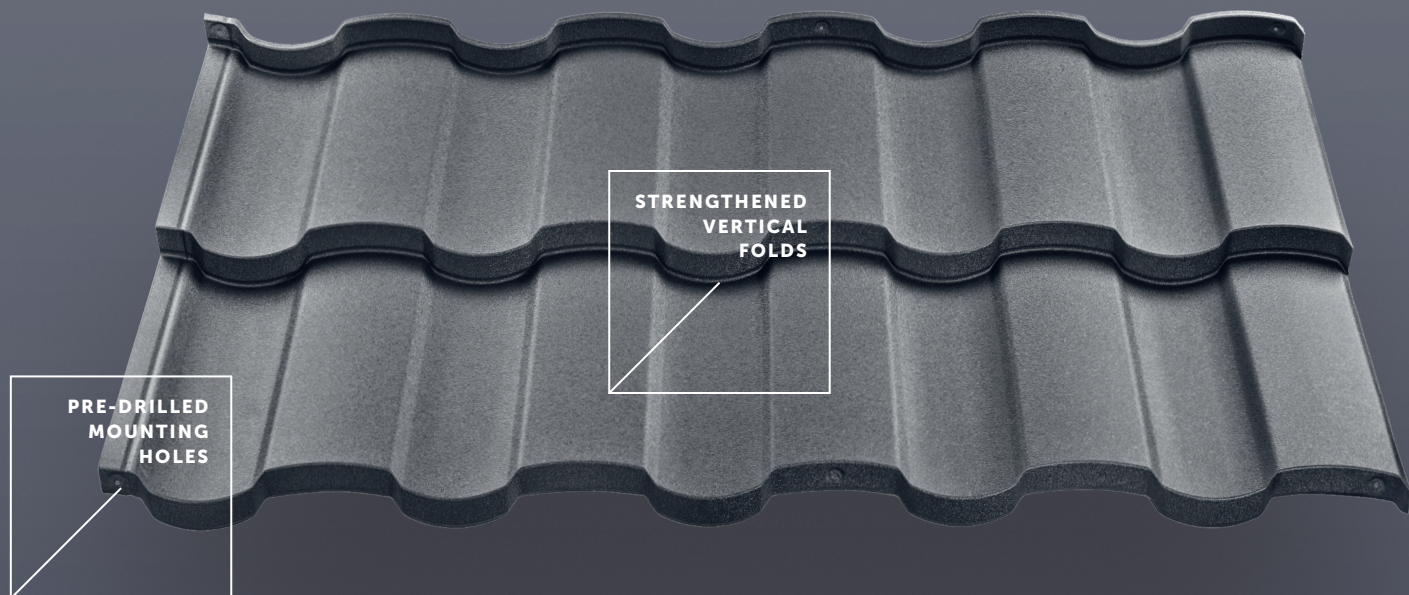
Quantity per pack

350 pcs

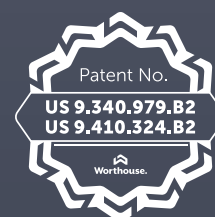
Effective surface area of one pack

3032 sq ft

281.75 sq m



Dura



Effective width

3.77 ft

1150 mm

Total width

3.92 ft

1195 mm

Weight per piece

8.16 lb

3.7 kg

Effective surface area of one sheet

8.66 sq ft

0.805 sq m

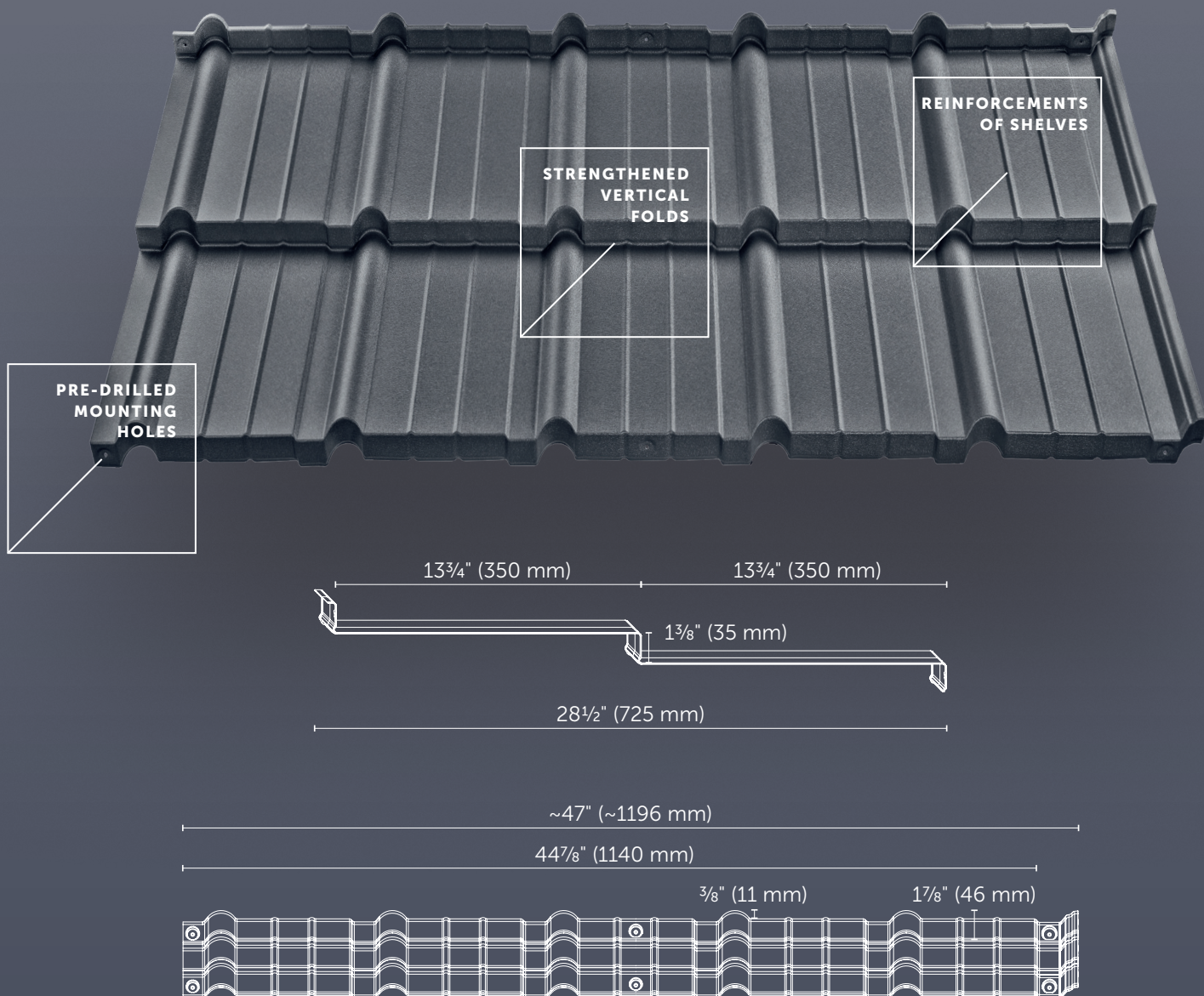
Quantity per pack

352 pcs

Effective surface area of one pack

3050 sq ft

291.104 sq m



Ultra



Effective width

3.74 ft

1140 mm

Total width

3.92 ft

1196 mm

Weight per piece

8.16 lb

3.7 kg

Effective surface area of one sheet

8.59 sq ft

0.798 sq m

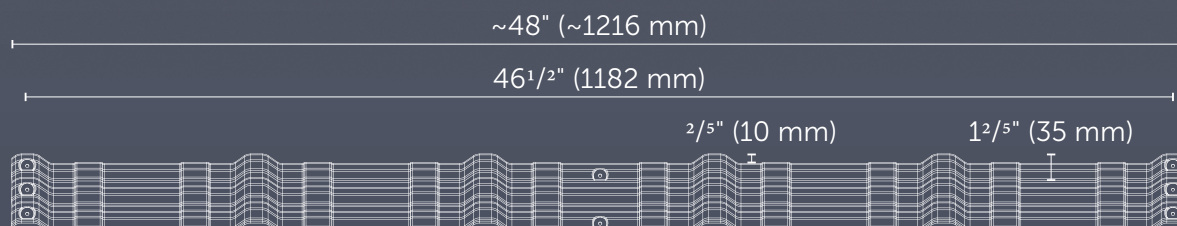
Quantity per pack

319 pcs

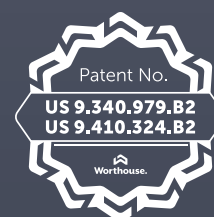
Effective surface area of one pack

2739 sq ft

254.56 sq m



LARGER COVERING AREA
ONLY 11 PANELS PER 1 SQ EFFECTIVE COVER



291.104 sq m

RAIN-THIRSTY FLAMINGO



SYSTEM

5³/₄" / 3¹/₂"

30
—
YEAR
WARRANTY

GREENCOAT® **RWS**
COLORFUL STEEL

SSAB

COLORS

 **Brown** ~RAL 8028/8017
GreenCoat RWS 434

 **Graphite** ~RAL 7011
GreenCoat RWS 087

 **Black** ~RAL 9005
GreenCoat RWS 015

 **White** ~RAL 9002
GreenCoat RWS 001

 **Brick-red** ~RAL 8004
GreenCoat RWS 742

The colors shown are illustrative
and may vary from the actual product.

GUTTER SYSTEM ELEMENTS



Patent for invention
217565

Patent pending
Rp14731, Rp17669, Rp18757, RWU66816, RWU68626

- | | | |
|--------------------|--------------------------------|-------------------------|
| 1. Gutter | 7. Drop outlet | 13. Downspout connector |
| 2. Joint connector | 8. Elbow | 14. Outflow elbow |
| 3. Fascia hanger | 9. Downspout | 15. Rain catcher |
| 4. Inside corner | 10. Downspout heavy duty mount | 16. Tee connector |
| 5. Outside corner | 11. Downspout strap anchor | 17. Rain trap |
| 6. End cap | 12. Downspout wall bracket | |





Exceptional fastening

Flamingo elements are moulded in specially designed, patented moulds. Forget about the leaks when assembled



Only the best materials

Flamingo was manufactured from GreenCoat RWS (Rain Water System) steel produced by SSAB – a Swedish global steel company. GreenCoat RWS was developed specifically to create high quality gutter systems

It has a double sided coating and is exceptionally durable. Coatings used in GreenCoat RWS products include polymer grains, which improve the surface scratch resistance



Evenness for years

Flamingo has a 30-year warranty for the C1-C4 environmental class (industrial and coastal areas with a high aggressiveness of the corrosive environment)



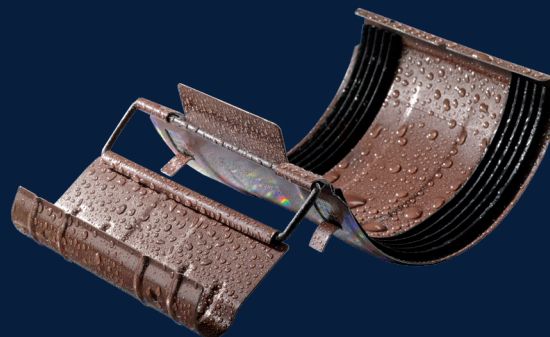
Safe transport and storage

Flamingo elements are factory-protected with foil. We transport it in specially designed packaging and care about the highest standard of storage

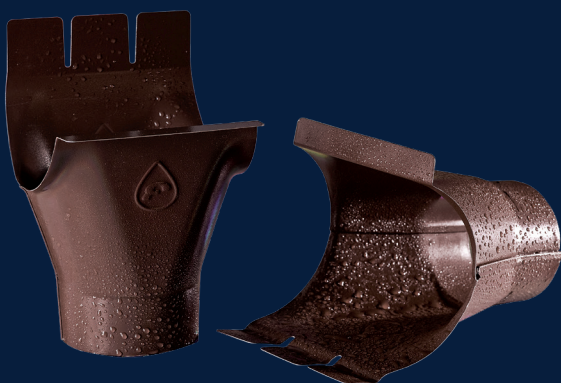
GUTTER



JOINT CONNECTOR

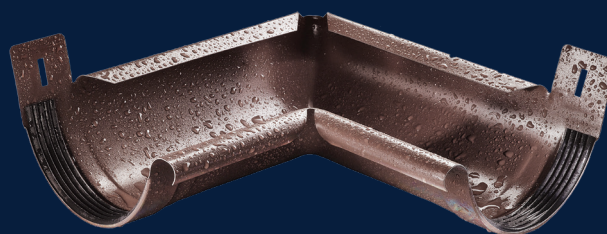


DROP OUTLET



INSIDE CORNER

90°



OUTSIDE CORNER

90°



FASCIA HANGER



END CAP



DOWNSPOUT

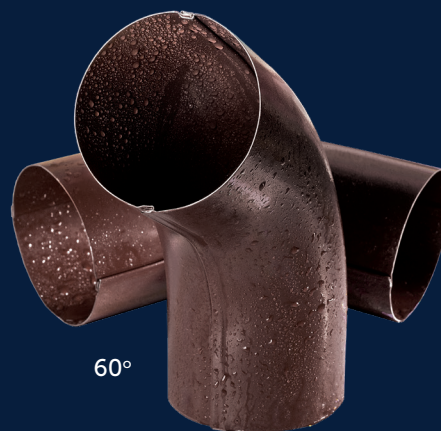


**DOWNSPOUT
HEAVY DUTY
MOUNT**

DOWNSPOUT CONNECTOR



ELBOW



60°

TEE CONNECTOR

RAIN CATCHER

OUTFLOW ELBOW



60°





High resistance to environmental conditions

GreenCoat RWS products are a lightweight construction material with a beautiful shine. They are very resistant to corrosion, UV rays and scratches



Complete steel roof

Flamingo is ideally suited with Worthouse Modular Roofing Tiles



Easy and fast assembly

Flamingo components are made with care for the smallest detail and fit together perfectly, making the assembly fast and easy



Extra strong gutter hangers

Flamingo hanger can easily carry weight of 165 lbs



The system is made of the best quality steel (24 gauge) covered with zinc 0.90 oz/ft²



Clean elegant look and unmatched aesthetics

It is the best system for metal roofing. Recommended by roofers. Flamingo has been a success for many years



Gold Medal MTP BUDMA 2010
for the Flamingo Steel Gutter System

PVC SOFFITS

DIMENSIONS

Covering width

12"
306 mm

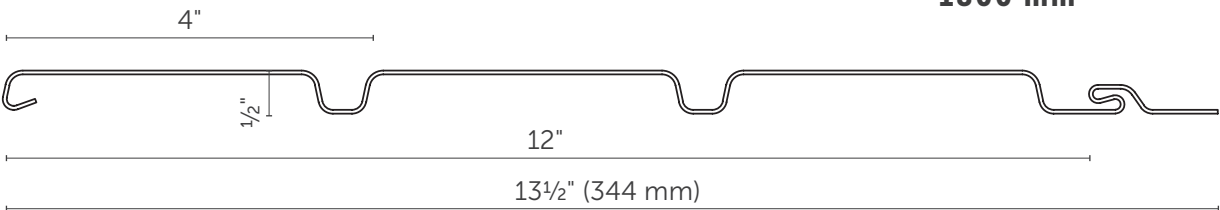
Panel height

1 1/2"
12.2 mm

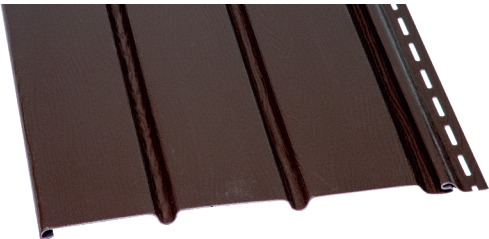
Available panel lengths

9' 10"
3000 mm

6'
1800 mm



STANDARD PANEL

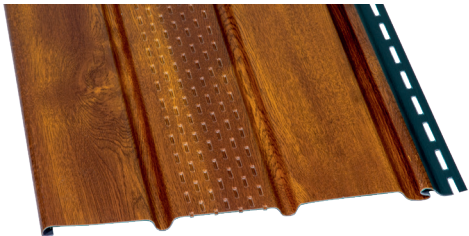
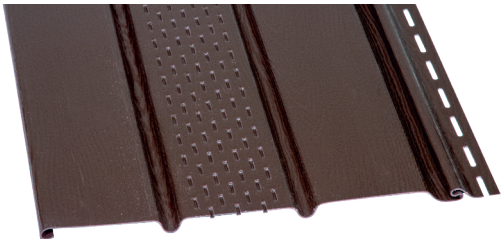


Traditional



Wood grain

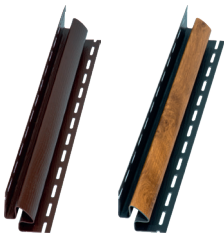
VENTED PANEL



J-channel
Traditional — Wood grain



H-channel
Traditional — Wood grain



Inside corner
Traditional — Wood grain



Outside corner
Traditional — Wood grain



Discover key advantages of Worthouse® PVC soffits

- Made of **highest quality two-layer PVC**, where one layer forms the core, providing **rigidity and mechanical durability**, while the other ensures **color durability** — we are **the only manufacturer to use two layers**
- **Exceptional thickness**, unmatched on the market (**up to 15% thicker** than competitive products)
- **Unique ventilation openings** that allow **proper ventilation** but in the same time **protect against insects** infiltrating under the roof covering
- **Excellent insulation properties** that safeguard the building against heat loss
- **Reliable protection for the roof** against strong winds and moisture
- **Safeguards the roof** from rodents, insects, and birds from getting underneath

COLORS

Traditional



Brown
~RAL 8017



Black
~RAL 9005



Dark Brown
~RAL 8019



White
~RAL 9010



Graphite
~RAL 7016

Wood grain



Golden Oak
Wood grain



Dark Oak
Wood grain



Winchester Oak
Wood grain

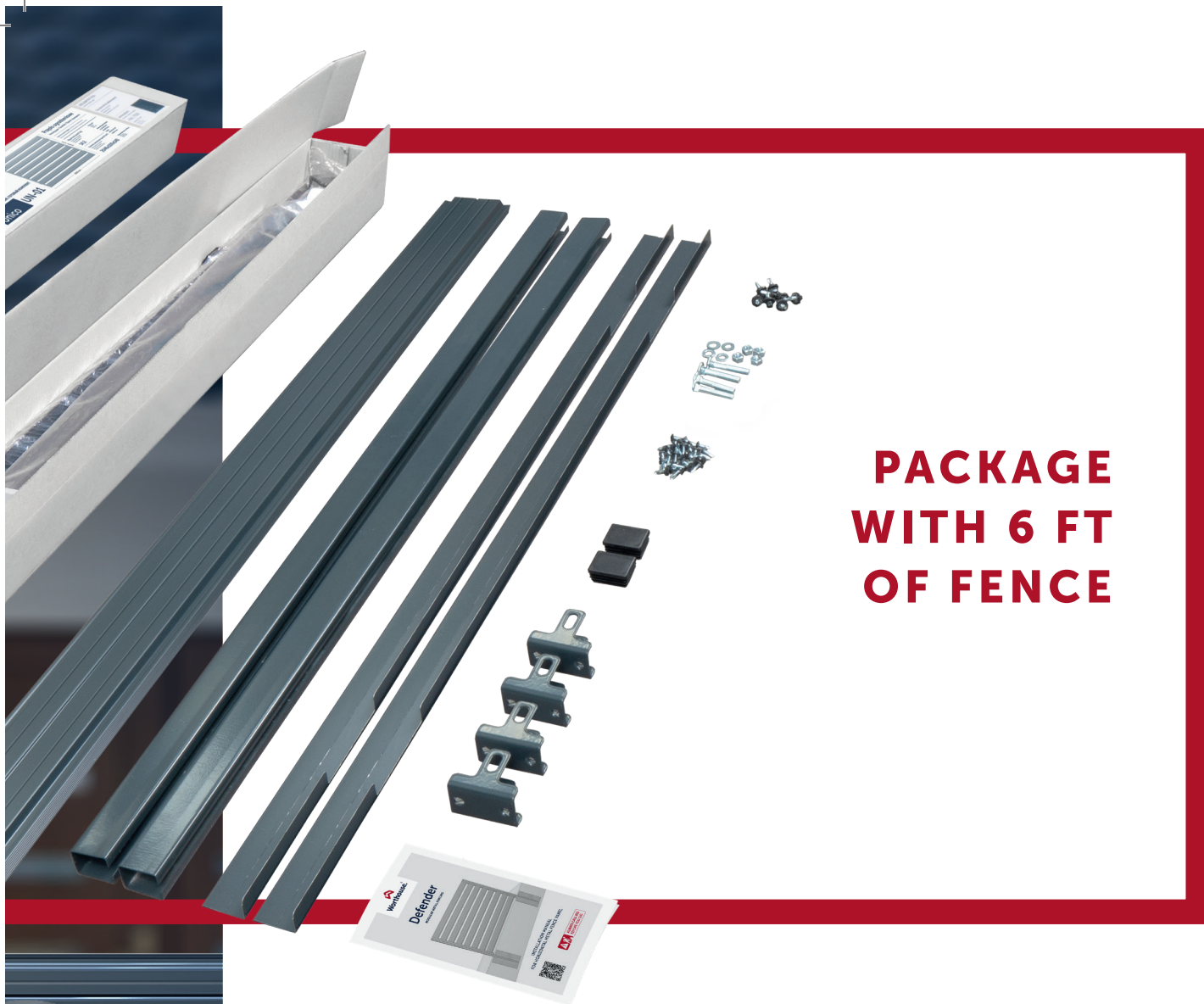
The colors shown are illustrative and may vary from the actual product.



FULFILL YOUR DREAMS OF A PERFECT NO MAINTENANCE FENCE

Ready system in one package

As the only manufacturer on the market, we offer a readymade span in one package. Thanks to the optimally thought-out and robust design of all the bay components and the package itself, transport and storage is really safe.



PACKAGE WITH 6 FT OF FENCE



Fast and safe transport

Don't waste your time and money on specialized transport with your order. Thanks to the availability of Worthouse fencing systems in convenient packages, transport by own car is possible.



Available from stock

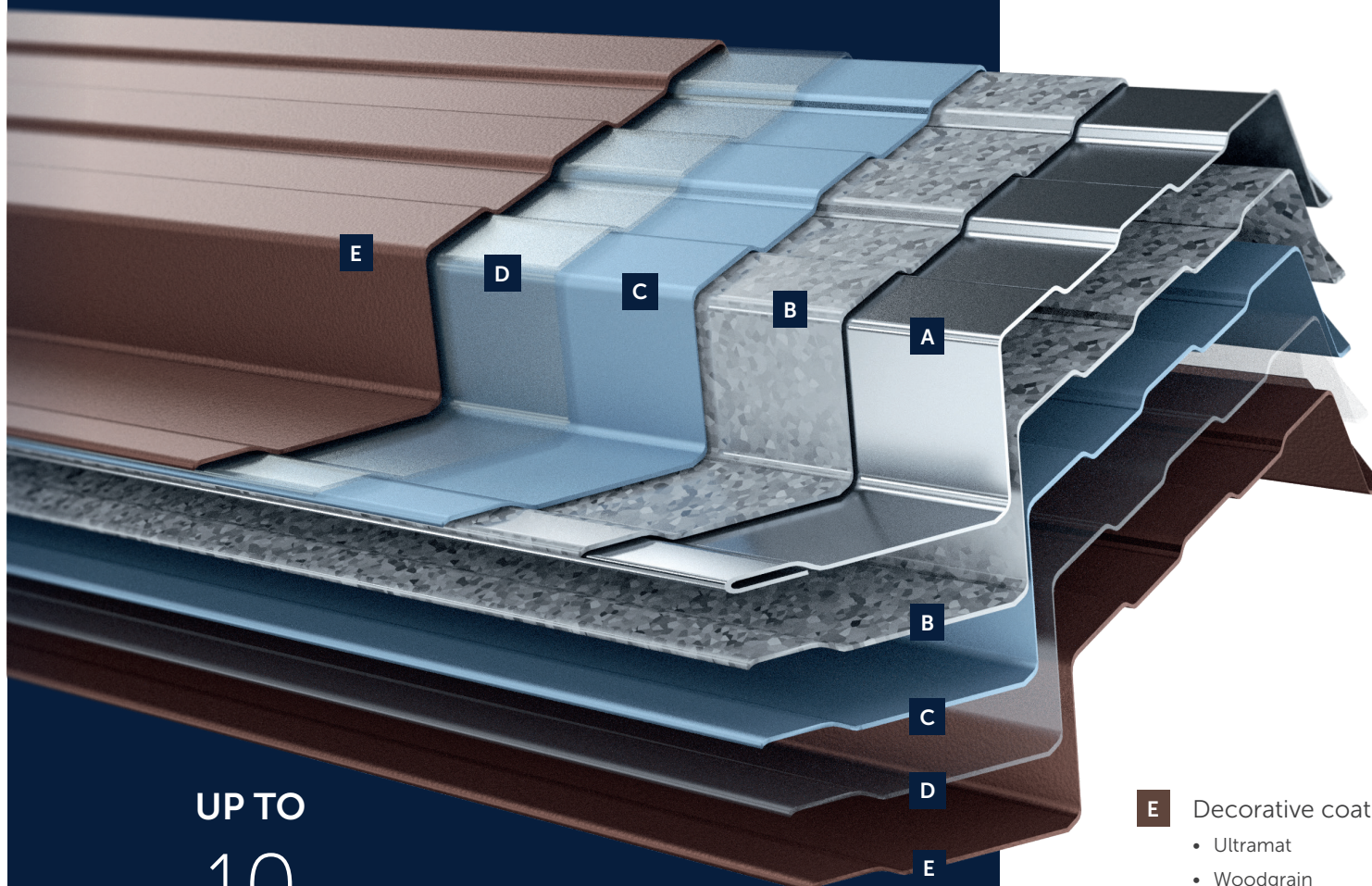
The investor or contractor can obtain a complete and properly secured material "from stock" at the nearest dealer. Availability that will meet the expectations of everyone – now it is possible!



Self-assembly? Why not!

No specialized crew to properly install the span? It's not a problem! The package includes simple, step-by-step installation manual that will show you how to do the job efficiently and independently.

PROTECTIVE COATING IN A BEAUTIFUL STYLE



UP TO
10
YEAR
GUARANTEE

depending on region of installation

ZINC
275
minimum
g/m²

G90
0.90
oz/ft²

For the production of the Worthouse Fencing System we use only high quality steel sheets with a zinc content of at least 275 g/m² – these are the best materials available on the market.



The highest level of protection

Worthouse Fence Systems are made of the highest quality steel – this material will give you peace of mind for years. Compared to wooden or vinyl fences, steel systems do not require constant refreshment and maintenance. Invest in safety and comfort!

E Decorative coating
• Ultramat
• Woodgrain

D Primer

C Conversion layer

B Zinc coating

A Steel core
Sheet steel S280

B Zinc coating

C Conversion layer


D Primer

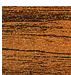
E Decorative coating
• Woodgrain
• Ultramat

DIMENSIONS

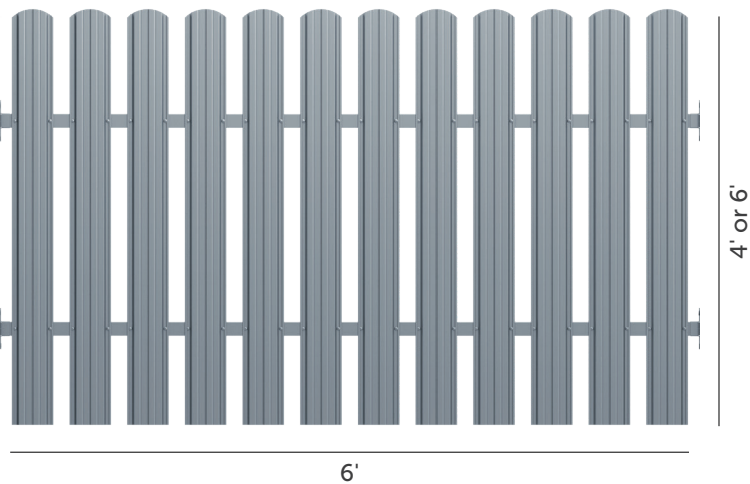
Length	Height	Sheet thickness	Weight in one package
6'	4', 5', 6'	0,5 mm	33,06 lb 15 kg

COLORS

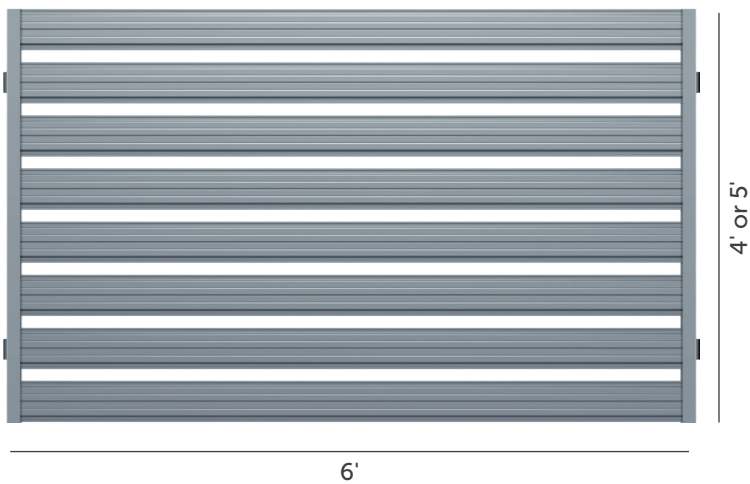
 Anthracite
~RAL 7016

 Walnut
Wood pattern

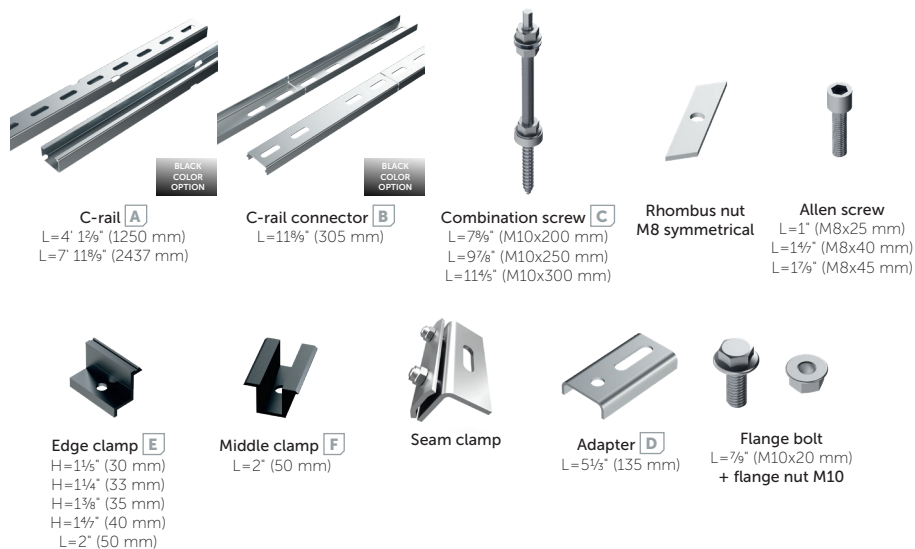
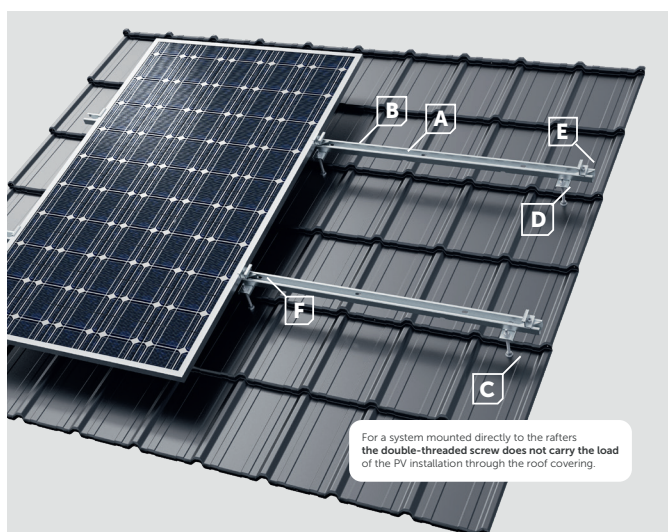
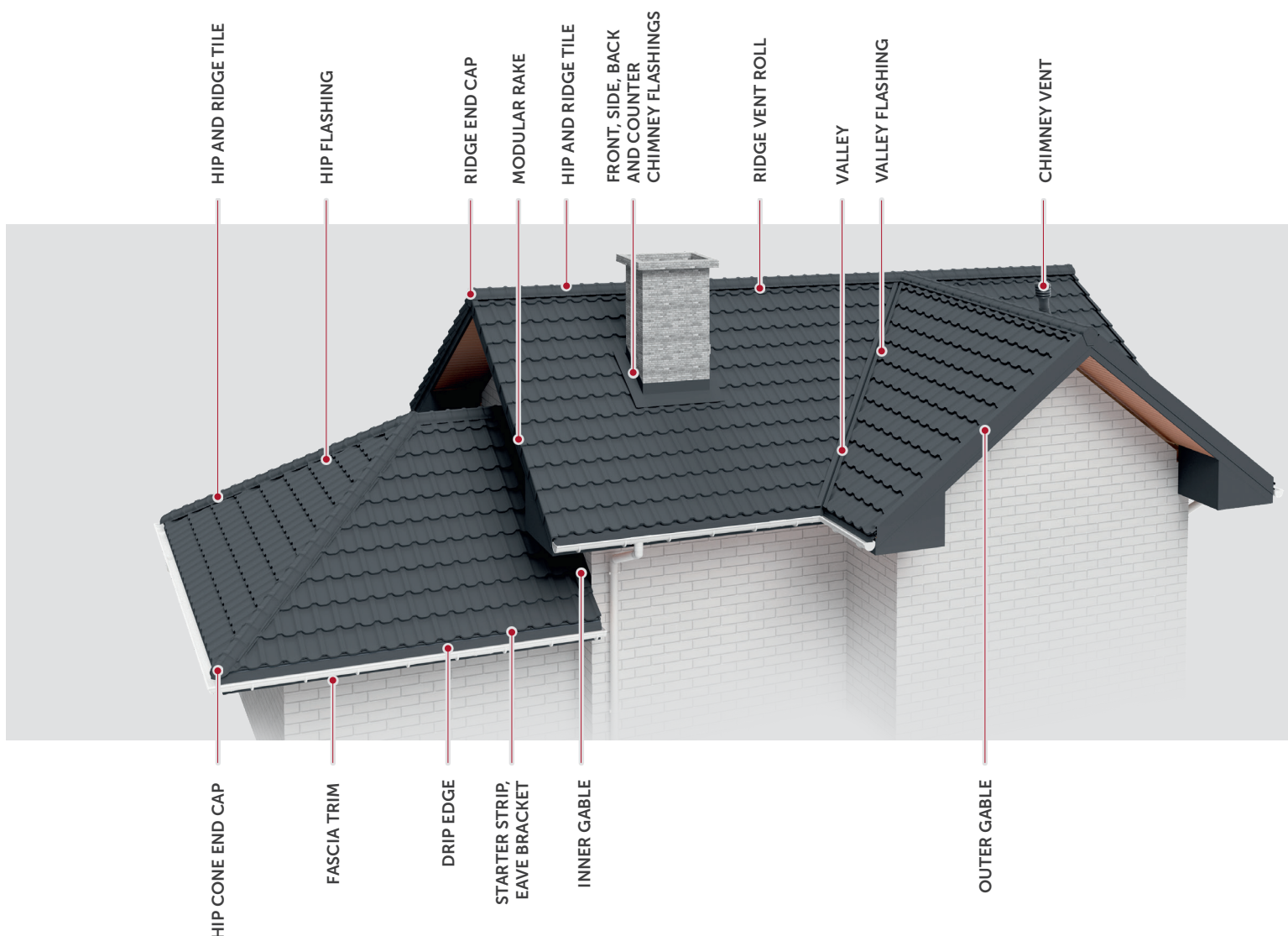
DEFENDER VERTICAL METAL FENCE



DEFENDER HORIZONTAL METAL FENCE



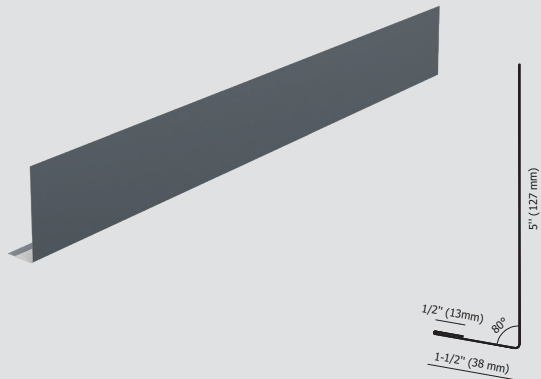
For more details contact your regional sales representative. The colors shown are illustrative and may vary from the actual product.



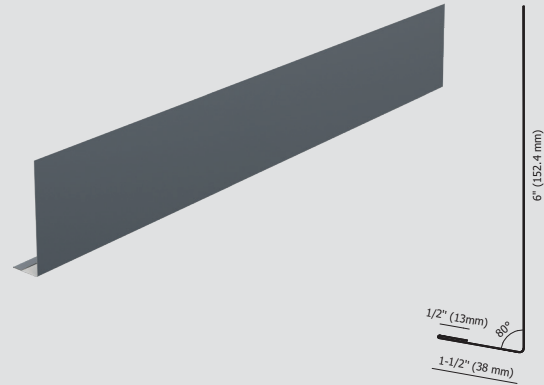
ACCESSORIES

#metalroofing

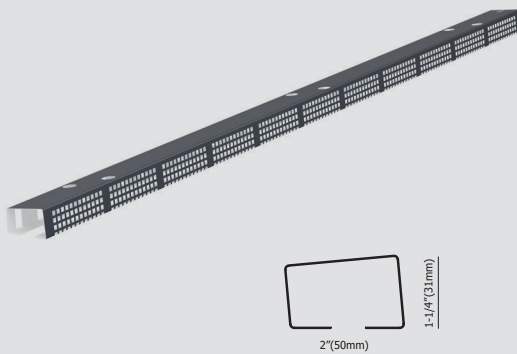
FASCIA/GABLE TRIM 5"
L=4 ft (1220 mm)



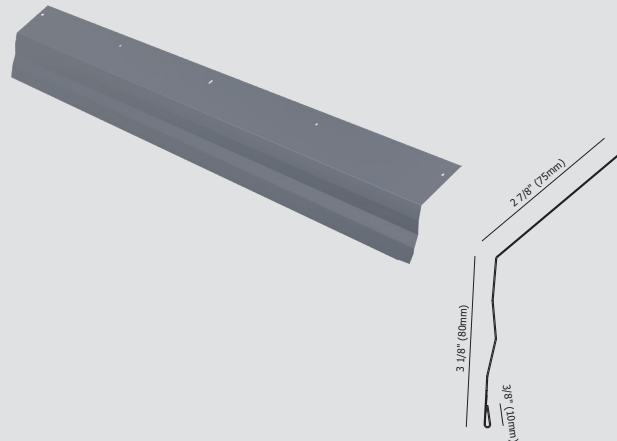
FASCIA/GABLE TRIM 6"
L=4 ft (1220 mm)



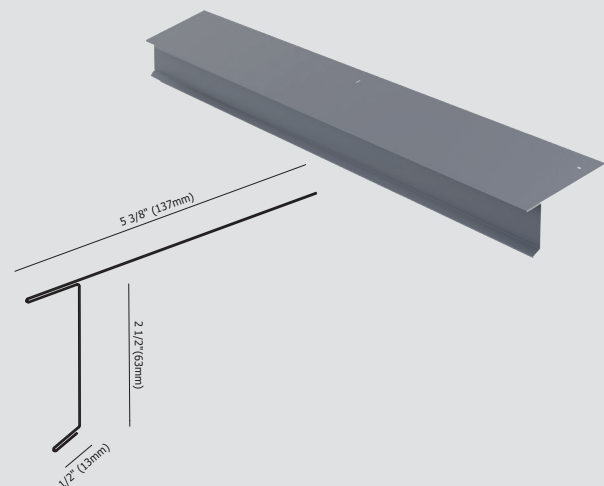
EAVE BRACKET
2 in x 4 ft (50 mm x 1200 mm)



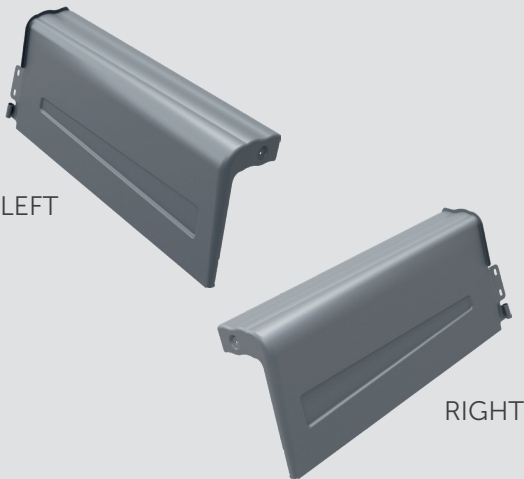
DRIP EDGE 3MOD
L=4 ft (1220 mm)
for Worthouse gutters or gutterless installations



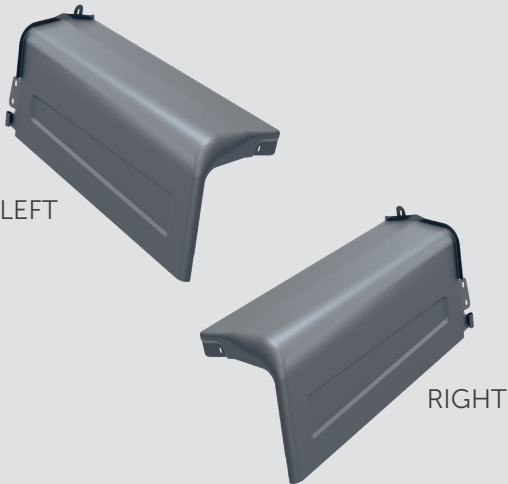
STARTER STRIP
L=4 ft (1220 mm)
for Worthouse gutters or gutterless installations



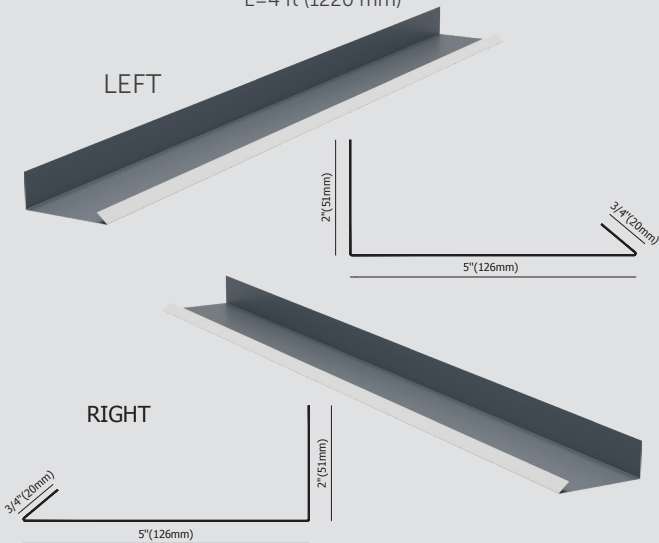
MODULAR RAKE FOR SUPRE



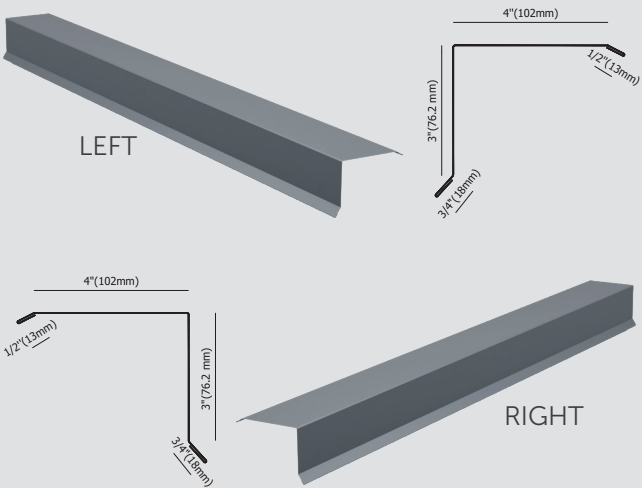
MODULAR RAKE FOR ULTA



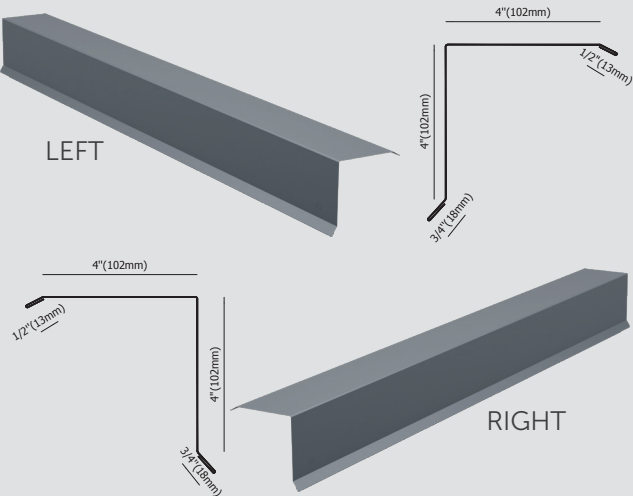
INNER GABLE
L=4 ft (1220 mm)



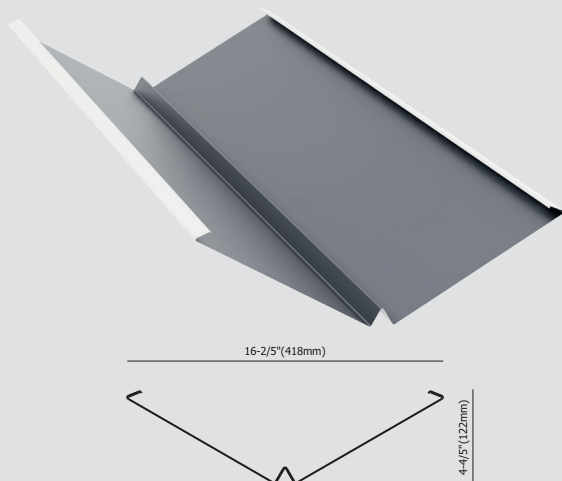
OUTER GABLE 3/4
L=4 ft (1220 mm)



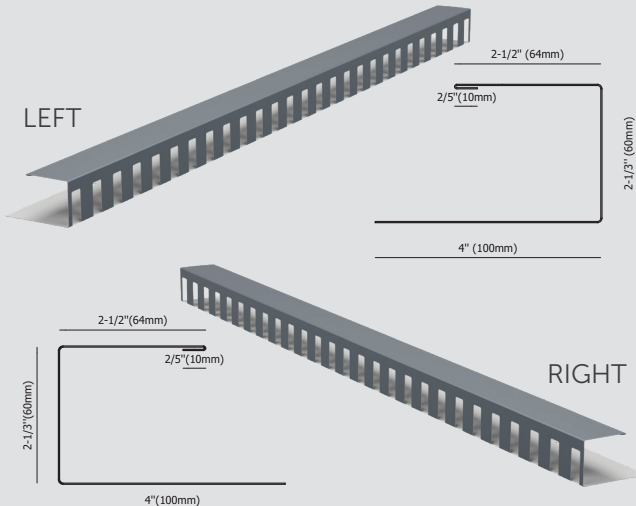
OUTER GABLE 4/4
L=4 ft (1220 mm)



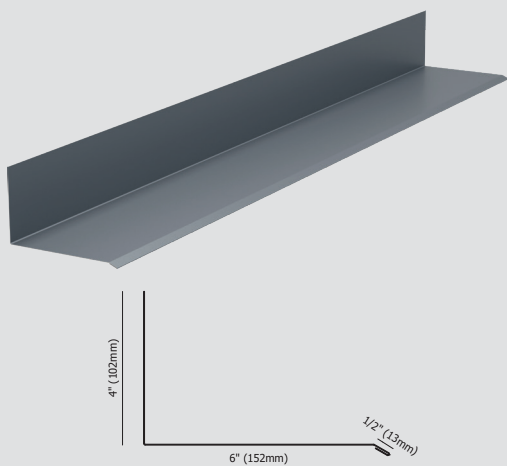
VALLEY-9
L=4 ft (1220 mm)



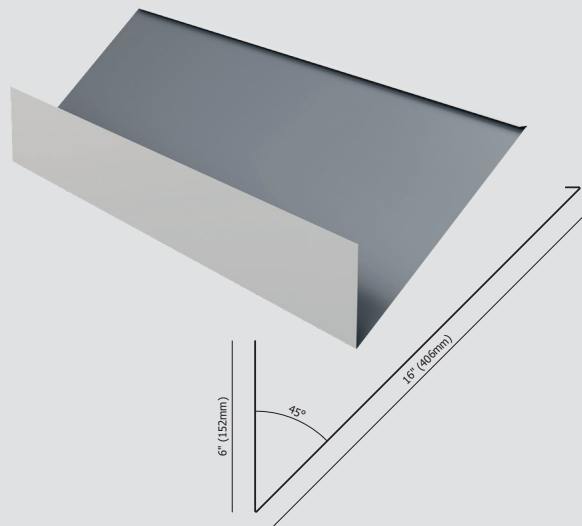
VALLEY FLASHING FOR SUPRE/ULTA/COMO/DURA
L=4 ft (1220 mm)



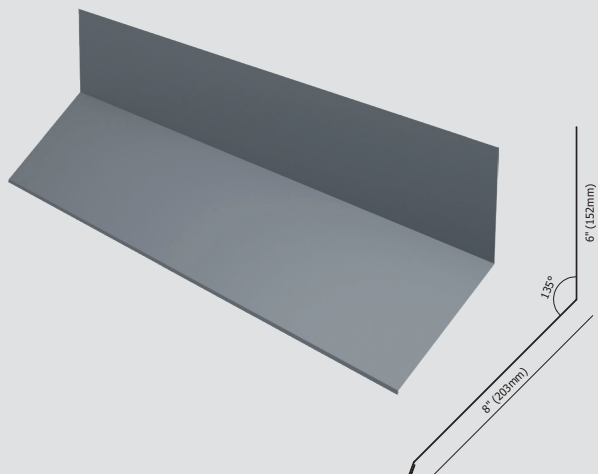
**SIDE CHIMNEY FLASHING
(OUTER DORMER FLASHING)**
L=4 ft (1220 mm)



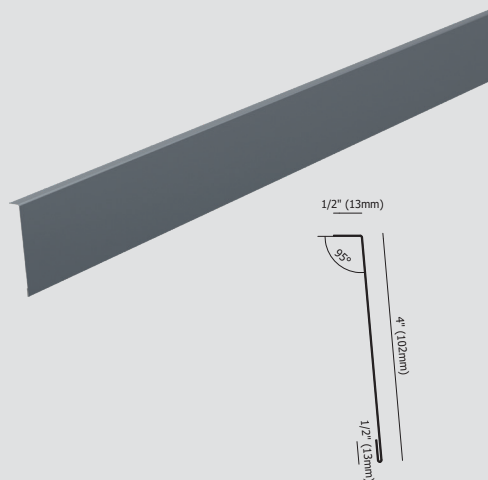
BACK CHIMNEY FLASHING
L=4 ft (1220 mm)



FRONT CHIMNEY FLASHING
L=4 ft (1220 mm)

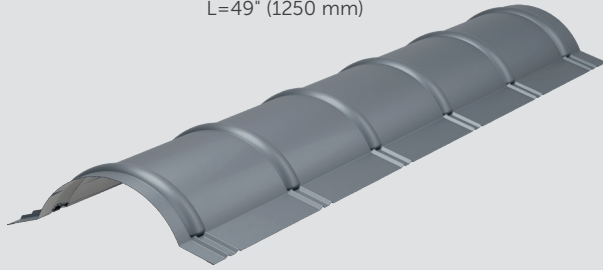


COUNTER FLASHING
L=4 ft (1220 mm)



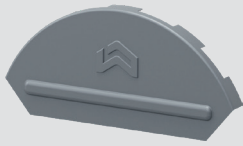
HIP AND RIDGE TILE UNIVERSAL

L=49" (1250 mm)



RIDGE END CAP

5.35 in x 0.71 in x 3.78 in
(212 mm x 18 mm x 96 mm)



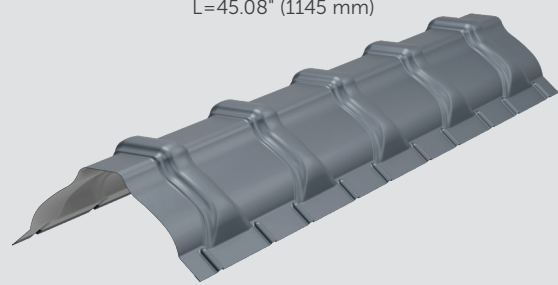
HIP CONE END CAP

12.5 in x 8 in x 3.25 in
(320 mm x 220 mm x 80 mm)



HIP AND RIDGE TILE LUX

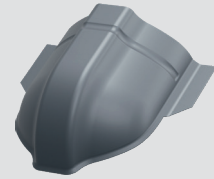
L=45.08" (1145 mm)



RIDGE END CAP RC-LUX

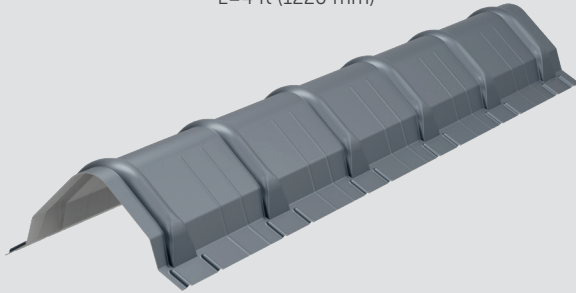


HIP END CAP RC-LUX

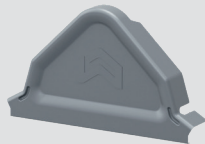


HIP AND RIDGE TILE TOP

L=4 ft (1220 mm)

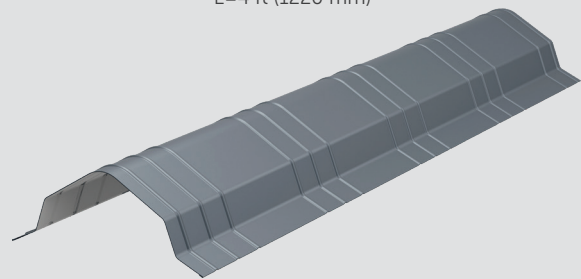


RIDGE END CAP RC-TOP

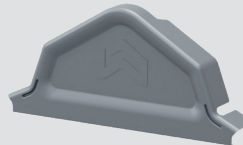


HIP AND RIDGE TILE FLAT

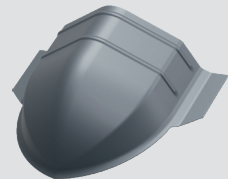
L=4 ft (1220 mm)



RIDGE END CAP RC-FLAT

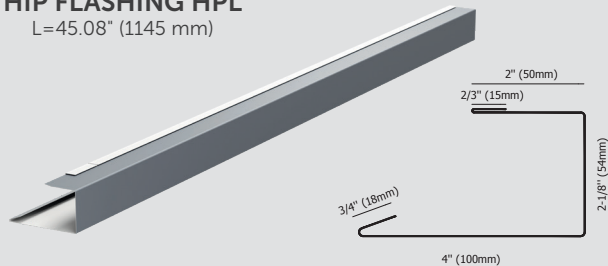


HIP CONE END CAP RC-FLAT



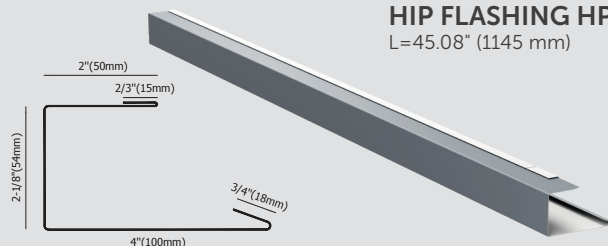
HIP FLASHING HPL

L=45.08" (1145 mm)



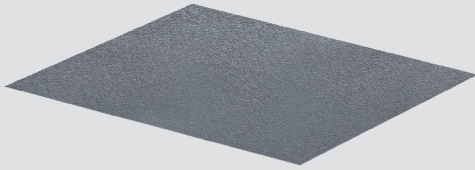
HIP FLASHING HPR

L=45.08" (1145 mm)



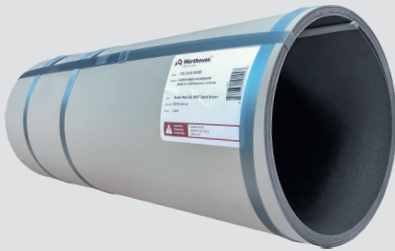
NOBLE MATT COATED FLAT SHEET

4' x 10' (1250 mm x 3050 mm)



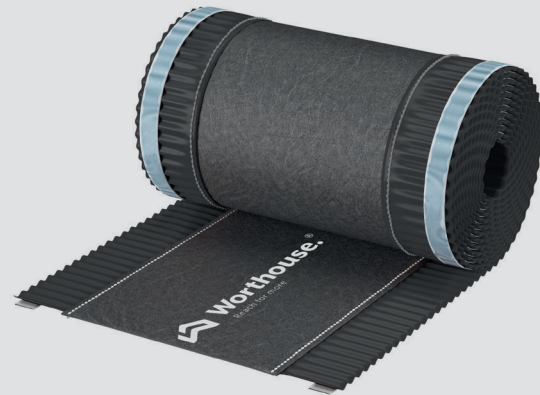
NOBLE MATT COATED STEEL COIL

2 x 50 ft (625 mm x 15.24 mb)



RIDGE VENT ROLL

12 in x 16.5 ft (310 mm x 5 mb)



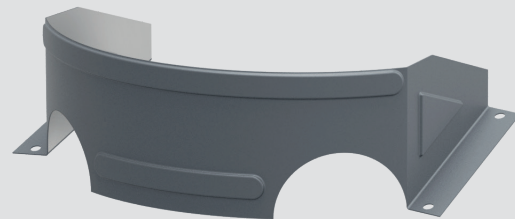
SEALING FOAM TAPE

0.4 in x 1.8 in x 10 ft 10 in (10 mm x 45 mm x 330 cm)



SNOW GUARD

9.25 in x 5.12 in x 3.15 in (235 mm x 130 mm x 80 mm)



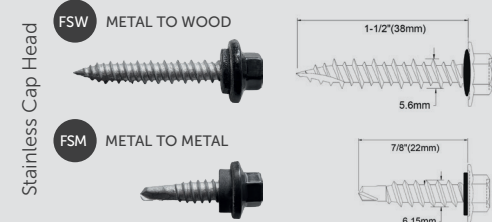
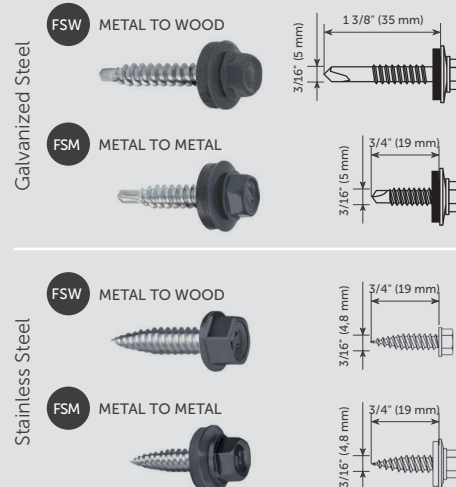
CHIMNEY VENT UNINSULATED



UNIVERSAL

SELF-DRILLING FASTENERS

Available in Galvanized Steel, Stainless Steel and Stainless Cap Head





In business for more than 30 years

Worthouse is a privately owned company with over 30 years of successful experience in the fabrication of steel, metal roofing systems, and construction materials. With four production plants boasting vast capacities backed by advanced R&D department delivering the most innovative solutions in the industry, we stand as a leading manufacturer of modular metal roofing.

Our North American headquarters and distribution center in Waynesboro, GA, is equipped with over 600,000 sq ft of industrial buildings. At Worthouse, we are committed to delivering exceptional performance, elegant design and reliable protection for generations.

Our products, trusted by roofing professionals and homeowners alike, offer unmatched durability and aesthetic appeal. Backed by reliable technical support and exceptional client service, Worthouse stands as a symbol of quality and excellence in the industry.

Worthouse products are present in 41 countries around the world. North America headquarters and distribution center are located in Waynesboro, GA.

Member of



Find out more at worthouse.com

**Worthouse products
are a Full Roof System with
a Limited Lifetime Warranty.**

**Engineered for extreme weather
and environmental conditions.**

Reaching above & beyond for you

— approved for sales nationwide

- Miami Dade approval (Approval No. NoA 17/0221.05)
- Florida Product Approval FL21544/R1
- UL Classified evaluation UL ER39048/01, UL 1897, UL580
- TDI approval RC-563
- Constant evaluation of our system elements to ensure highest quality solution.

A roof that will last as long as its foundation

- Worthouse Modular Metal tile “warrantied duration” is achieved thanks to our source, multinational steel supplier ArcelorMittal providing the strongest raw material available.



What makes us unique?

Competitive Offer

Worthouse is a leading manufacturer of steel fabrication and cutting-edge metal roofing solutions, offering premium modular panels, gutter systems, and soffits. Our products provide unmatched durability, elegance, and ease of installation, setting us apart in the market.

Cutting Edge Technology & Quality

Engineered with meticulous attention to detail, our modular metal roofing panels boast unparalleled protection against extreme elements. We prioritize quality, with raw materials sourced exclusively from premier steel mills in Germany and Sweden, and invest in unique, patented solutions for effective and simplified installation.

Successful Heritage & People Power

With three decades of successful experience in Europe and a leading position in steel fabrication, Worthouse operates from four advanced production plants. Our expertly trained and seasoned employees provide unmatched technical and professional support, making us industry leaders in comprehensive solutions from steel profiles and pipes to solar panels and PVC elements.

For what matters most to you

- With the strongest warranty on the market, Worthouse is ensuring long term protection for your investments.
- Discounted insurance rates up to 25%.

The purchase of a lifetime

- With the lifetime warranty life cycle, divided by average costs for materials & installation Worthouse metal roofing achieves very low cost per square per year over its lifetime. Making it one of the most affordable roofing products on the market.

Eco friendly

- Products create less waste, with the market average of 10+%.
- Worthouse tiles are 100% recyclable.
- Allows installation of solar panels.
- Little to no maintenance.



Worthouse.®

Metal Roofing Manufacturing



Extreme weather protection against hailstorm, rain, snow, heat and wind



One pallet – one job



Lightweight and easy to handle



Pre-drilled holes enable self-calibration of roof



Easy and space efficient storage



Quick and efficient installation



Roof angle and partially installed roof corrections



Batch-to-batch color consistency guarantee



Less than 5% material waste



Complete set of accessories



High wind resistance



Fire protection – class A degree

Worthouse.® Inc.

321 Mills Rd.

Waynesboro

GA 30830



T: (706) 955-4005

worthouse@worthouse.com

worthouse.com

